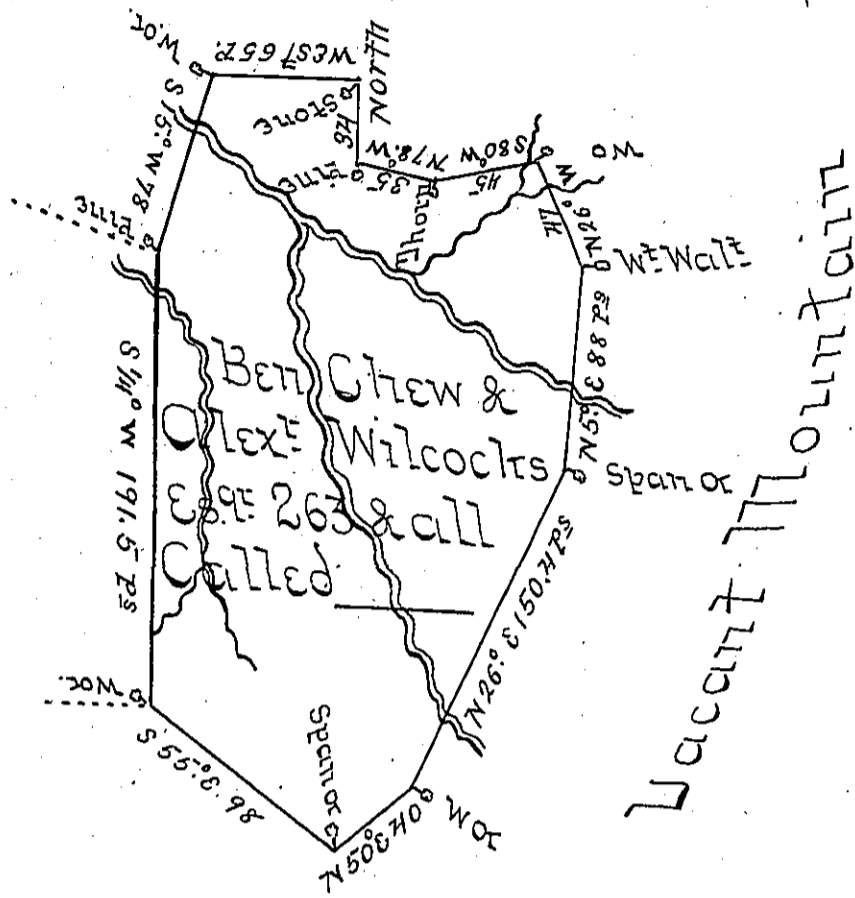


Warranting Land



Shillings Land

Situate Northward of Shillings Land on the Waters of Yough in Brothers Valley Township Bedford County including part of a Run that empties into the River above Hays's Glade and surveyed the 29th day of March 1775 in pursuance of a Warrant dated the 5th day of October 1774.

pt
 OF THE Game Dept

To John Lukens Esq. Sqr.

IN TESTIMONY that the above is a copy of the original remaining on file in the Department of Internal Affairs of Pennsylvania, made conformably to an Act of Assembly approved the 16th day of February, 1833, I have hereunto set my Hand and caused the Seal of said Department to be affixed at Harrisburg, this eleventh day of May 1904.

Grace B. Pearson
 Secretary of Internal Affairs.